

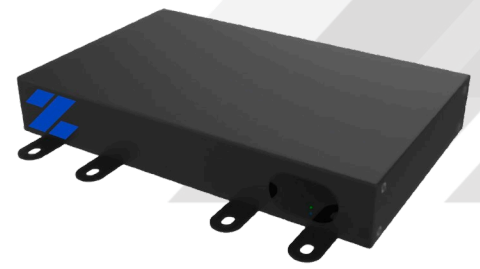
# Z-IP Decode 500

## Product Specifications



# Z-IP Decode 500

## Product Specifications



### Product Description

The Z-IP Decode 500 keeps the discreet and rugged attributes of its smaller sibling (the Z-IP Decode 400) while offering a wide variety of video formats and the ability to handle 4K content. From digital signage scenarios to various hospitality environments, 4K-based applications continues to grow in demand. The Z-IP Decode 500 handles all of these and more in a compact, tamper-proof chassis.

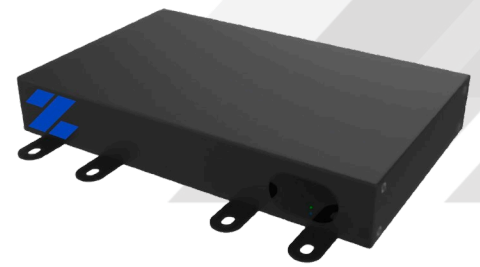
### Product Highlights

- ✓ Rugged, fan-less, 100% silent compact appliance
- ✓ Decode two HD IP streams / video files simultaneously for engaging signs or PiP view
- ✓ Discrete hardware processors of IP video decoding and signage graphic payout
- ✓ Microsoft Active Directory support for single-sign-on workflow
- ✓ TV control using RS-232 interface
- ✓ PoE / PoE+ support
- ✓ API for integration / control from mobile devices

<b>Model</b>	<b>ZBT0300153</b>
<b>Physical</b>	<b>Dimensions:</b> 246mm W x 154mm D x 32mm H <b>Weight:</b> 775g <b>Internal Storage:</b> 32GB <b>IR Remote Control:</b> Programmable, up to 16 unique pairings <b>Enclosure:</b> Rugged metal chassis, fan-less, 100% silent <b>Mounting:</b> Built-in brackets, VESA
<b>Electrical</b>	<b>Power Supply (AC to DC):</b> 24W Max, 90-264VAC <b>Power of Ethernet Support:</b> PoE+ (IEEE 802.3at - 2009)
<b>Video</b>	<b>Formats:</b> MPEG-2, MPEG-4 AVC (H.264), VC-1/WMV, HEVC (H.265), VP9, HTML5, XVID, DIVX <b>Maximum Resolution:</b> 3840x2160, 60fps, HDR <b>Aspect Ratio:</b> 16:9, 4:3
<b>Audio</b>	<b>Formats:</b> MPEG-1 L2, MPEG-1 L3 (MP3), AAC, AAC-LC/LC+, AAC+, AAC-HE, WMA, WMA Pro, Dolby Digital / AC3, Dolby Digital Plus, AAC-HE 5.1 w/ DTS 3.1/5.1

# Z-IP Decode 500

## Product Specifications



<b>Streaming</b>	<b>Protocols:</b> UDP TS, RTP TS, RTSP, Apple HLS, Unicast, Multicast, HTTPS
<b>Encryption</b>	<b>Content Protection/DRM:</b> MPEG TS w/ 128-bit, MPEG TS w/ AES 256-bit, Z-IP Connect, Z-IP Encode Blades and Appliances, ATX Ucrypt, MS Active Directory Integration
<b>Interfaces</b>	<b>Network:</b> 1 x 100/1000 <b>HDMI Digital A/V:</b> 1 x HDMI 2.0 w/ 4K, 3D, CEC Support <b>Analog A/V:</b> 1 x mini-din break-out cable for component RGB or YPrPb + unbalanced stereo audio <b>USB:</b> 1 x USB 3.0, 1 x USB 2.0 <b>TVI Control Port:</b> 1 x RS-232 w/ IR Remote Control Sensor and Extender Port
<b>Digital Signage</b>	<b>Multi-stream HD Decoding:</b> 2 x 1920x1080 streams/files <b>Web technologies:</b> HTML, JavaScript, PHP, HTML5, CSS <b>Latency:</b> 300ms decoding <b>Processing:</b> PiP, Alpha Channel, Text/Graphic Overlays, 100% hardware video decode, Separate processing of video and graphics with no shared resources, Emergency Management
<b>Environment</b>	<b>Operating Temperatures:</b> 32°F to 122°F (0°C to 50°C) <b>Relative Humidity:</b> 5% to 95% (non-condensing) <b>EMC Standards:</b> FCC Part 15 <b>Compliances:</b> RoHS, TAA

